



Tumors derived from PROCR-positive mammary stem cells give rise to claudin-low breast cancer with poor prognosis

**Poster
11**

Michal Kloc
Bentires-Alj lab

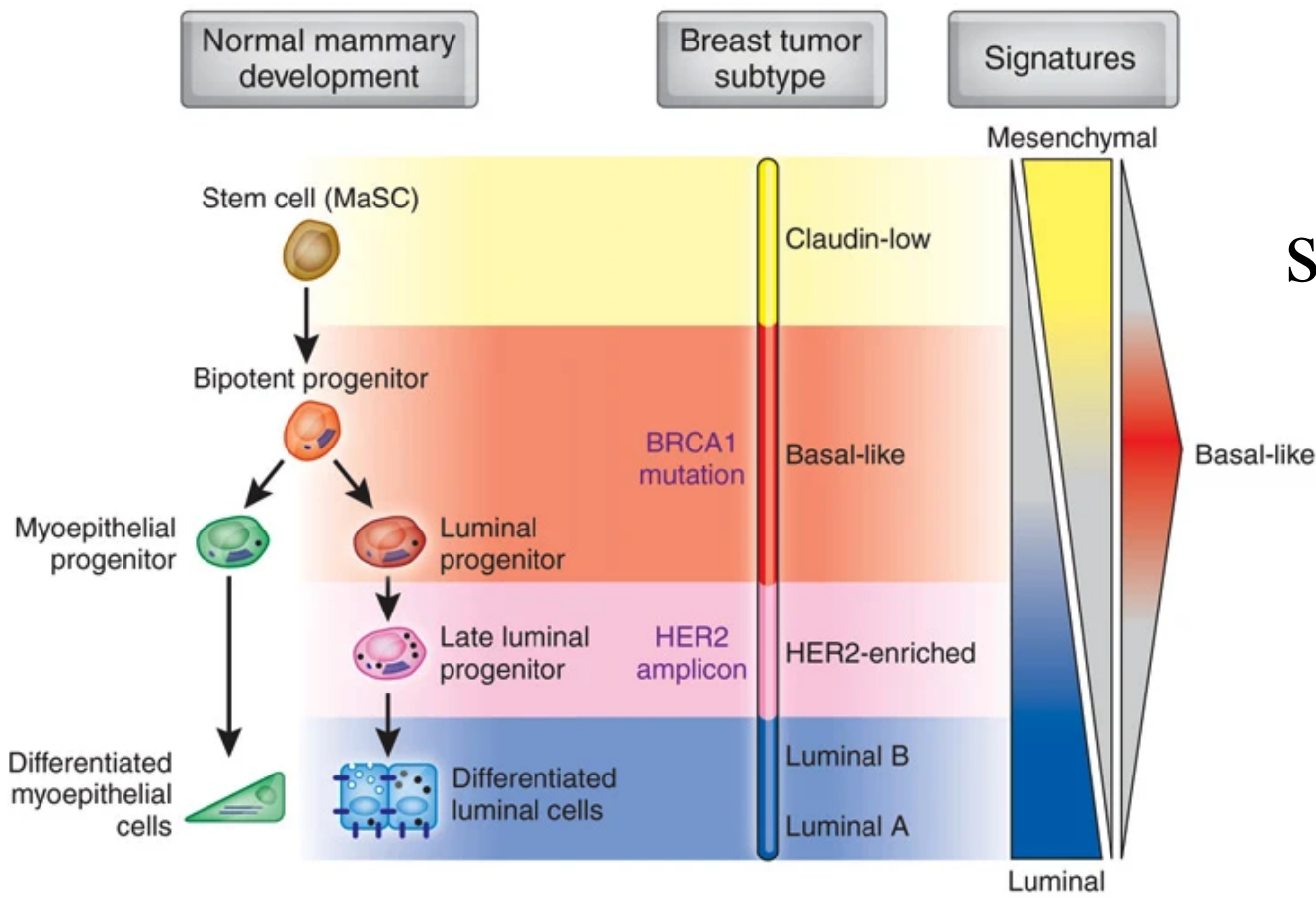
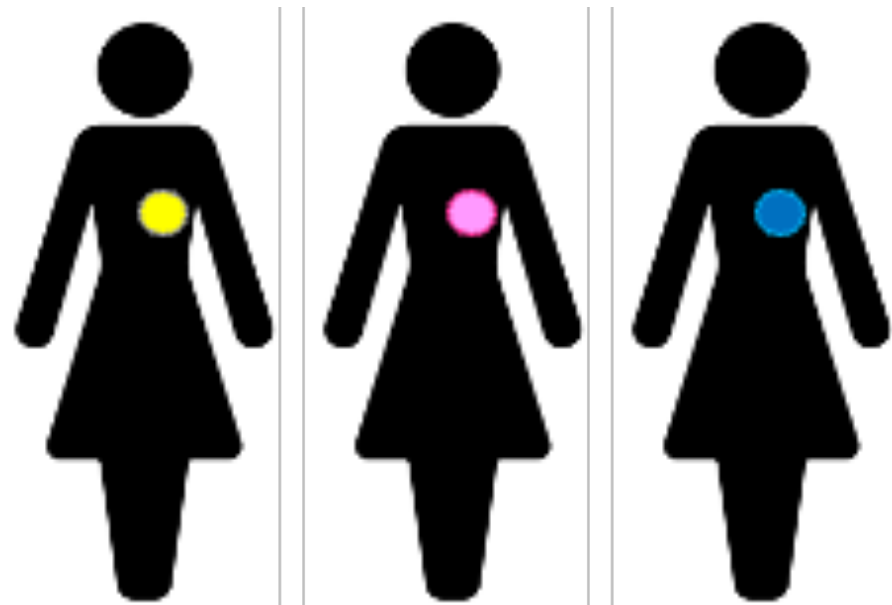


with Marion A. Salvador

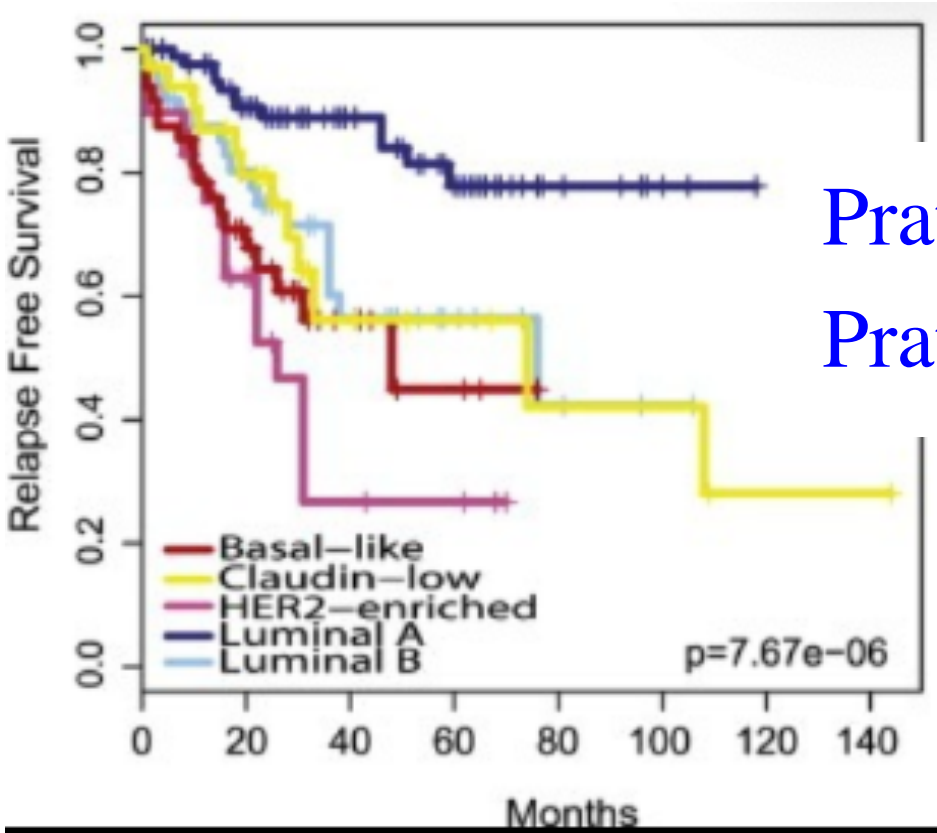
Breast cancer heterogeneity is responsible for therapy failure

Cell of origin concept

inter-tumoral heterogeneity



Association between breast cancer (BC) molecular subtypes and differentiation status of healthy mammary cells based on gene expression profiling

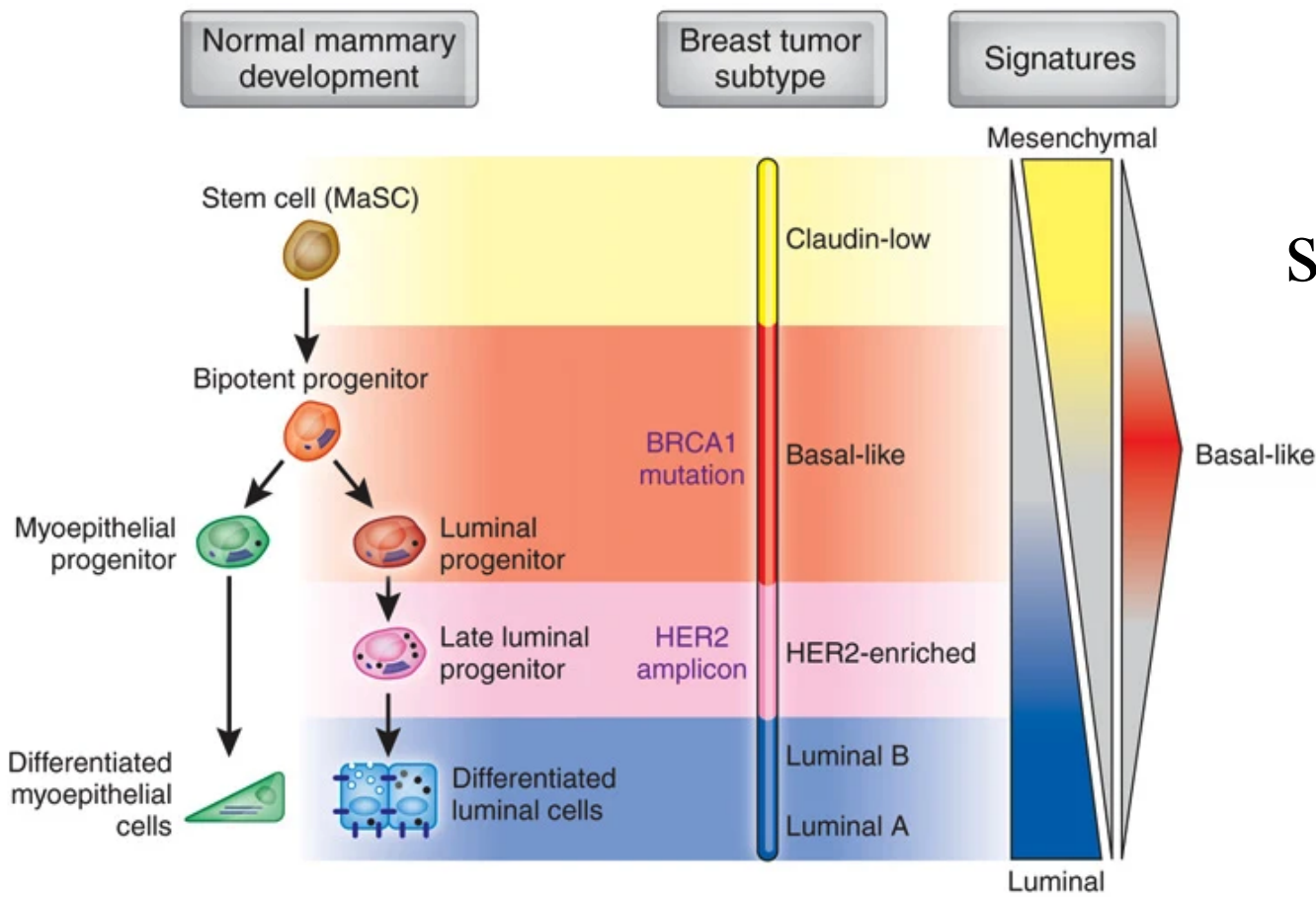
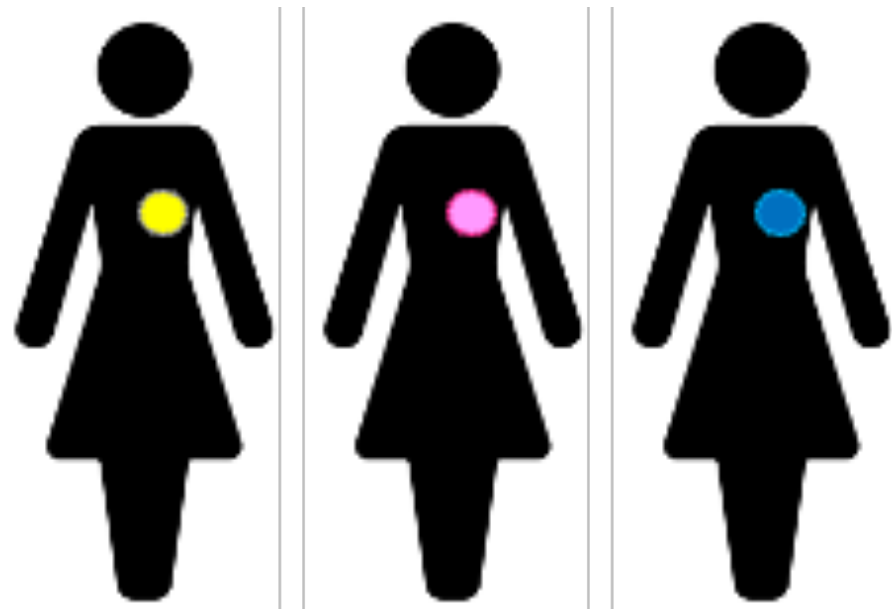


Prat, Perou, *Nat Med.* 2009,
Prat, Perou, *Mol Oncol.* 2011

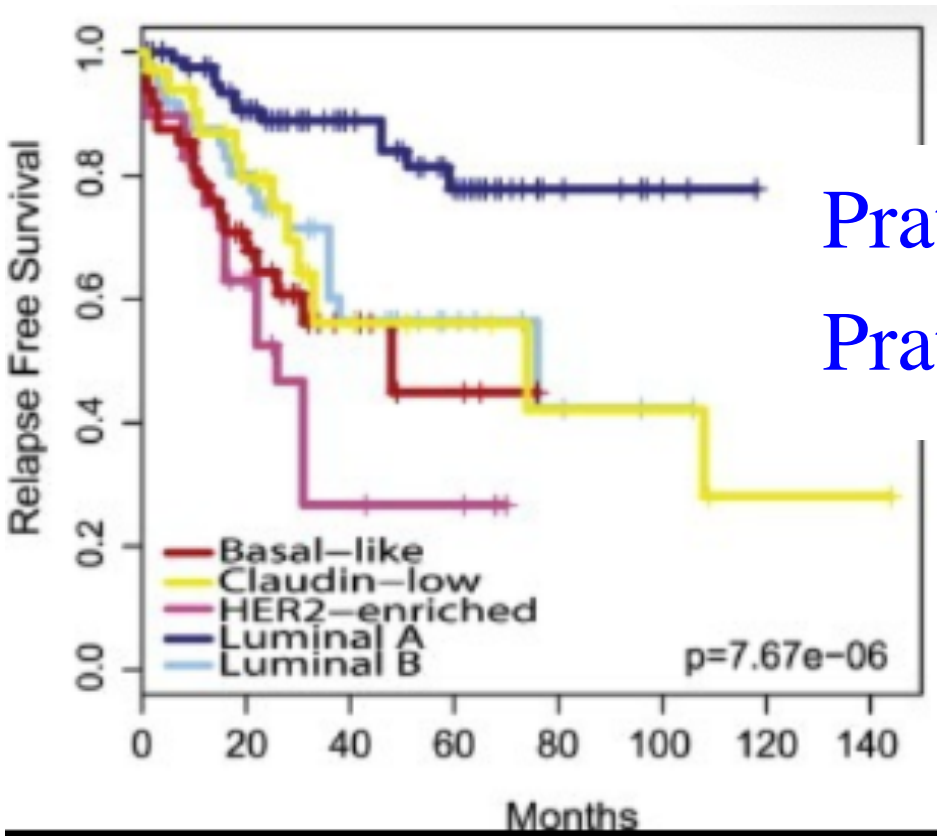
Breast cancer heterogeneity is responsible for therapy failure

Cell of origin concept

inter-tumoral heterogeneity



Association between breast cancer (BC) molecular subtypes and differentiation status of healthy mammary cells based on gene expression profiling



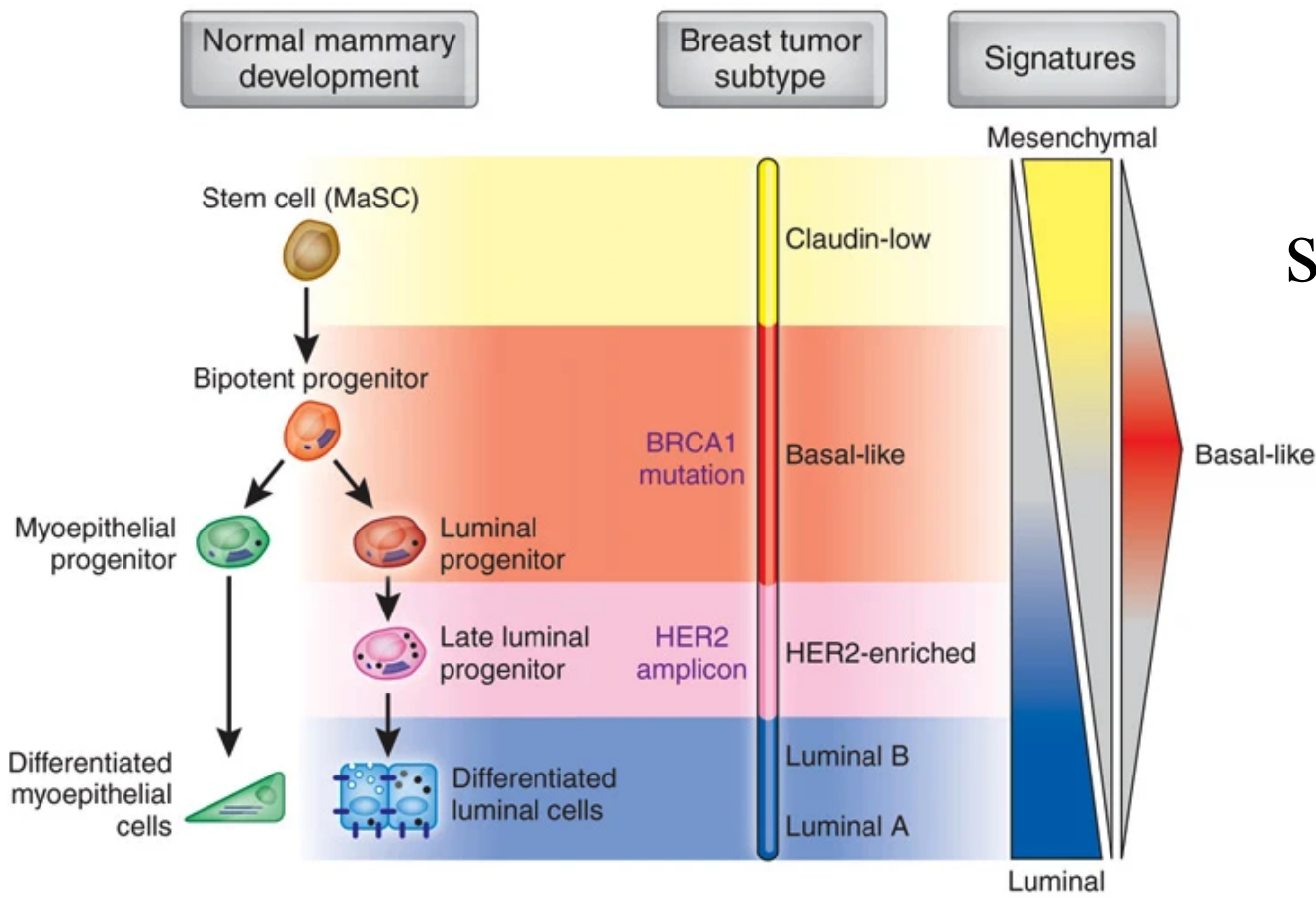
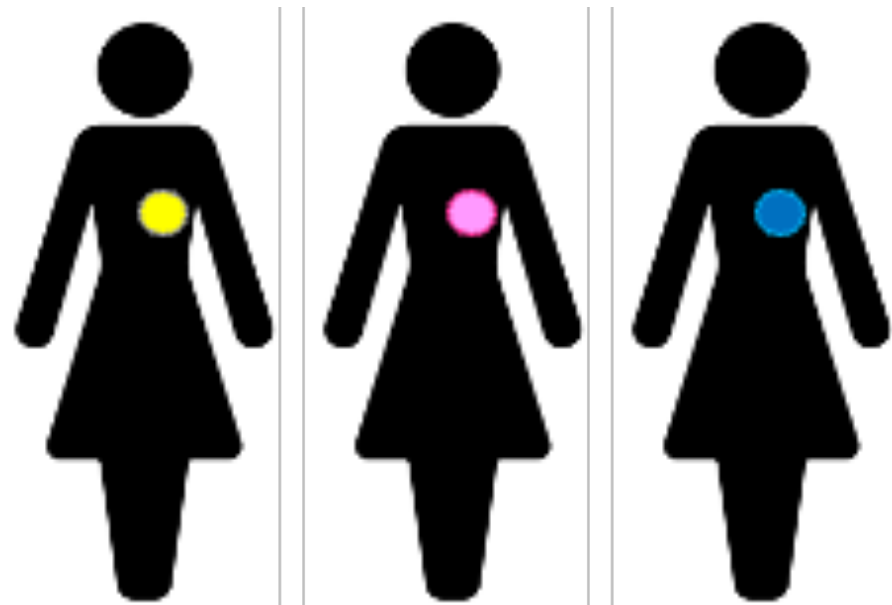
Prat, Perou, *Nat Med.* 2009,
Prat, Perou, *Mol Oncol.* 2011

Endothelial protein C receptor (PROCR) is a marker of multipotent mammary stem cells (MaSCs) in mouse [Wang et al, Nature, 2015](#)

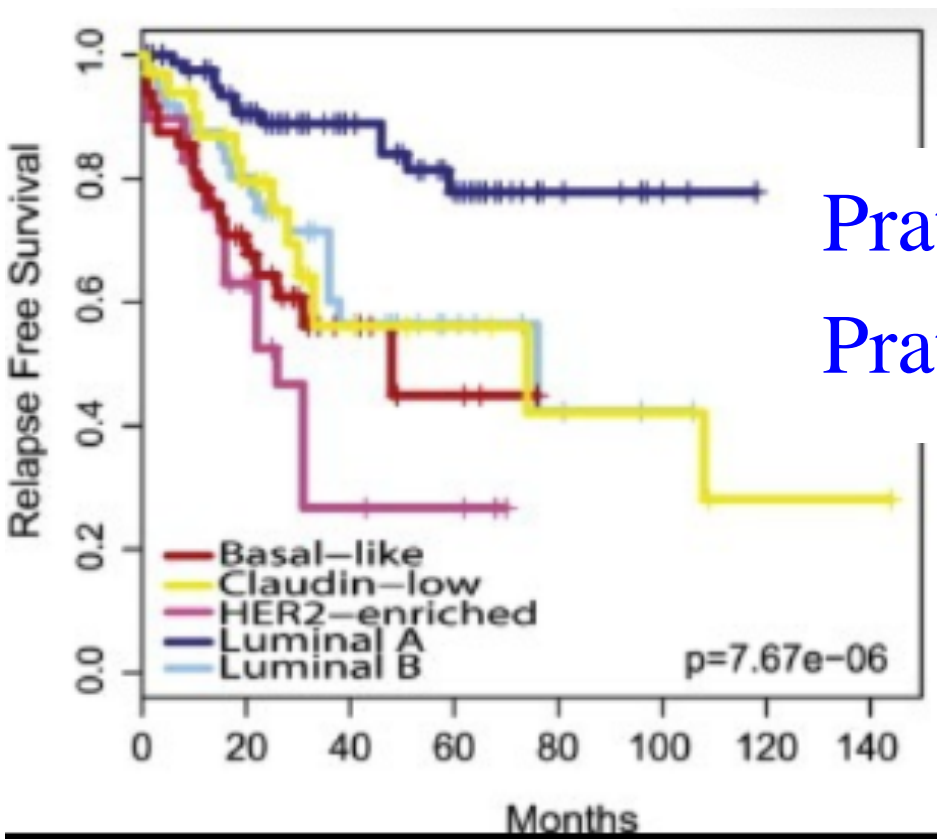
Breast cancer heterogeneity is responsible for therapy failure

Cell of origin concept

inter-tumoral heterogeneity



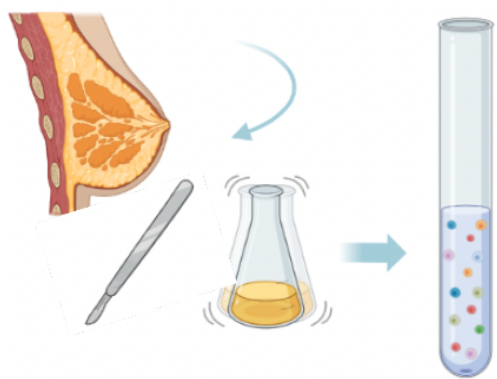
Association between breast cancer (BC) molecular subtypes and differentiation status of healthy mammary cells based on gene expression profiling



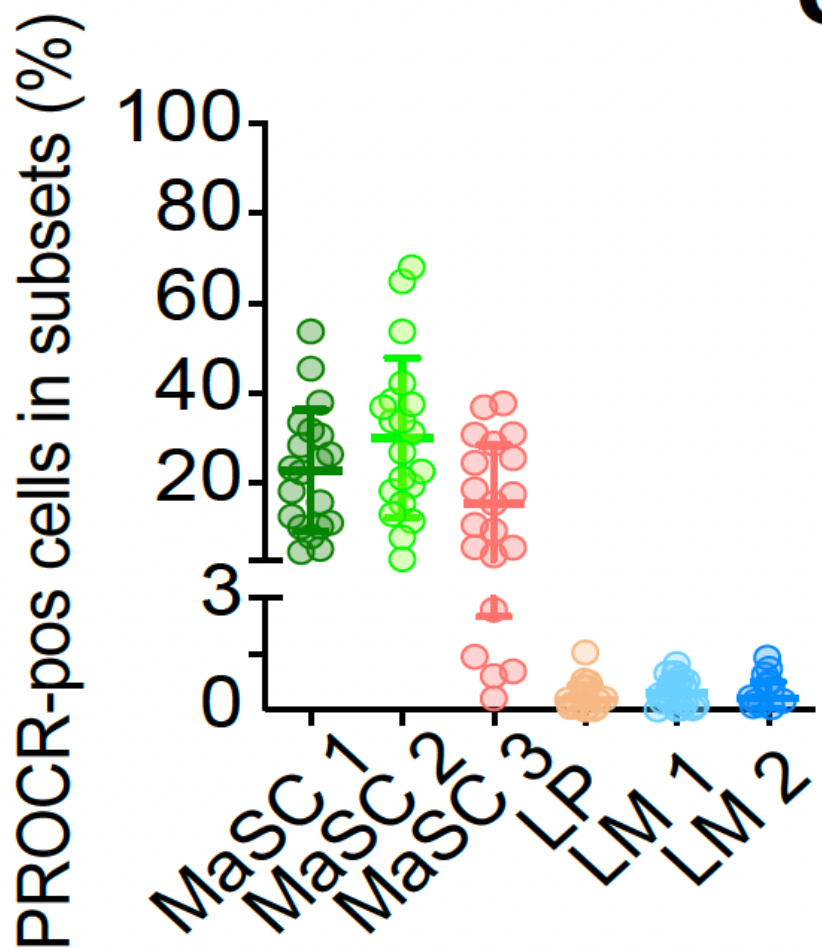
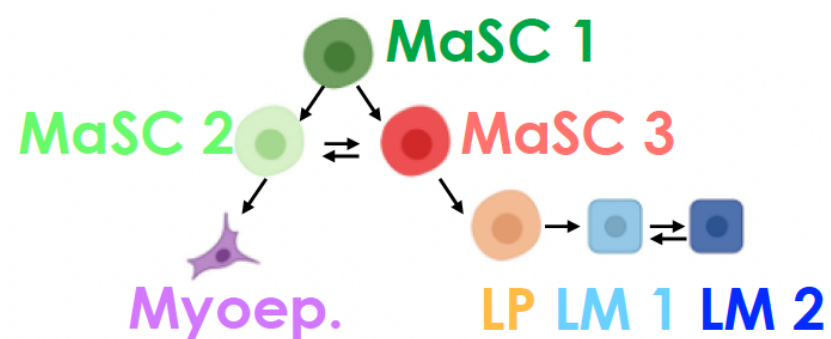
Prat, Perou, *Nat Med.* 2009,
Prat, Perou, *Mol Oncol.* 2011

Endothelial protein C receptor (PROCR) is a marker of multipotent mammary stem cells (MaSCs) in mouse [Wang et al, *Nature*, 2015](#)

PROCR+ cells are found in Mammary Stem Cells populations



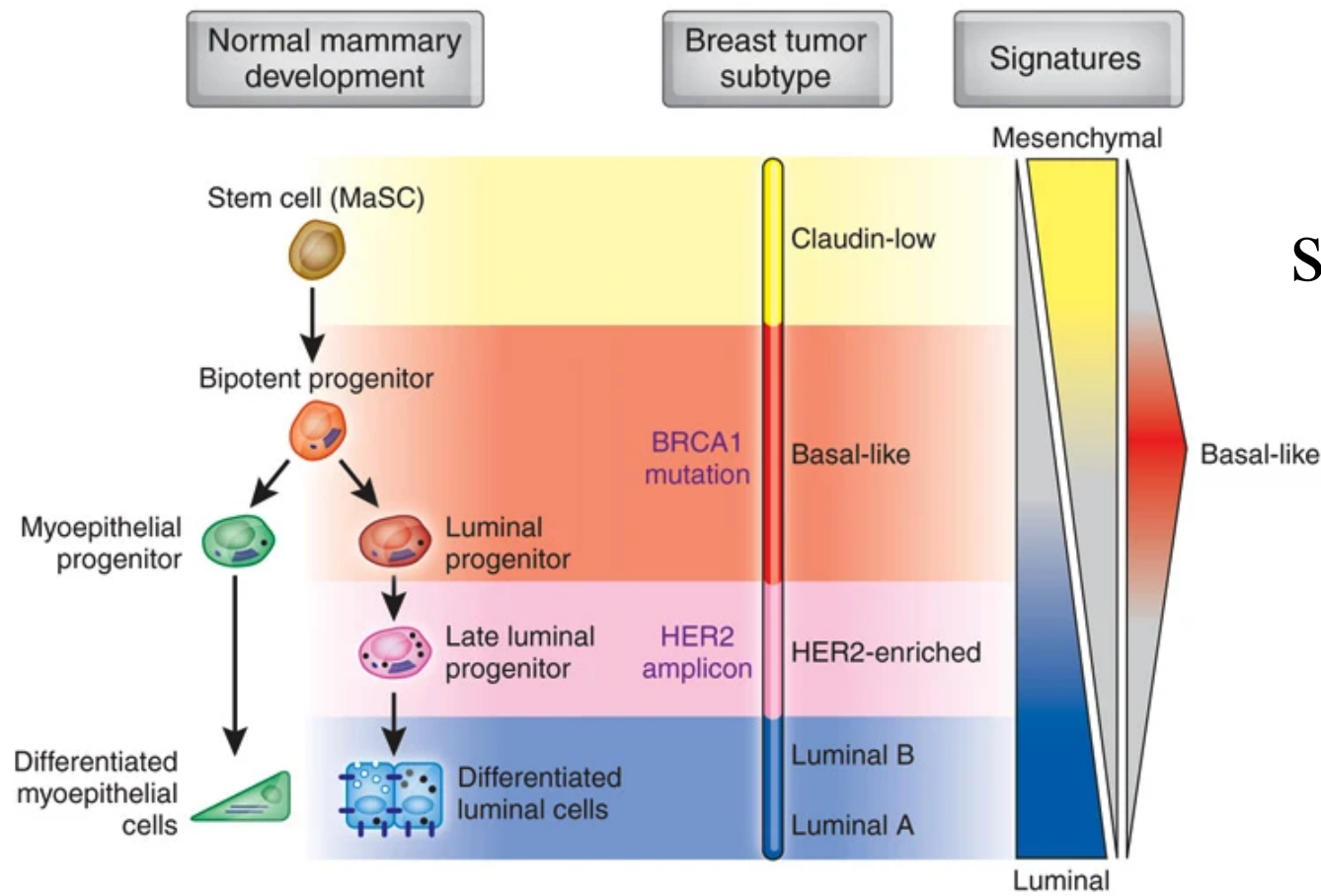
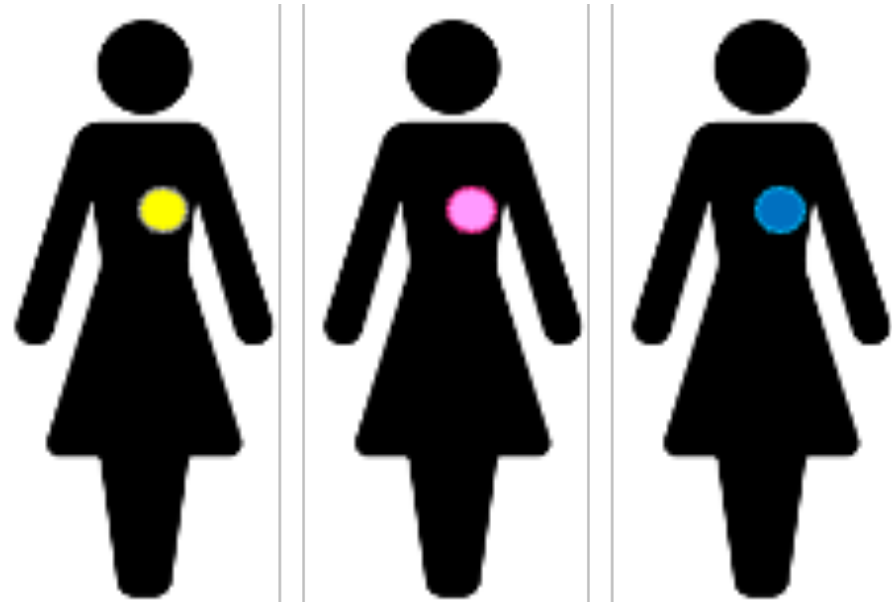
MaSC subsets from
[Morel, Ginestier et al., *Nat Med.*, 2017](#)



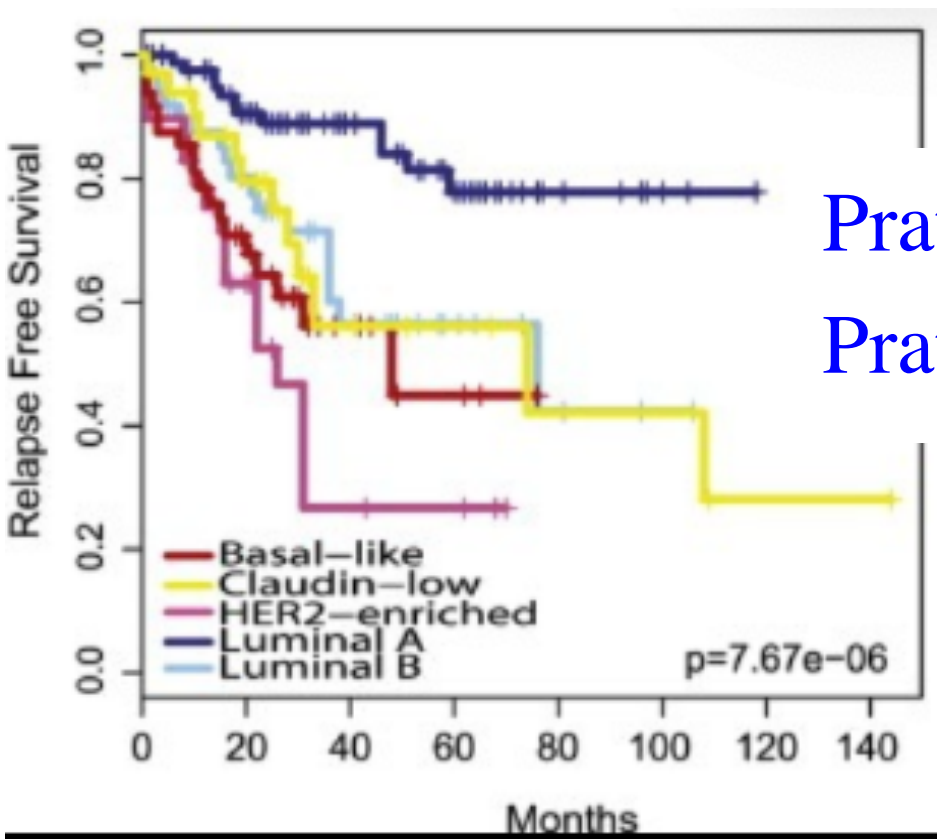
Breast cancer heterogeneity is responsible for therapy failure

Cell of origin concept

inter-tumoral heterogeneity



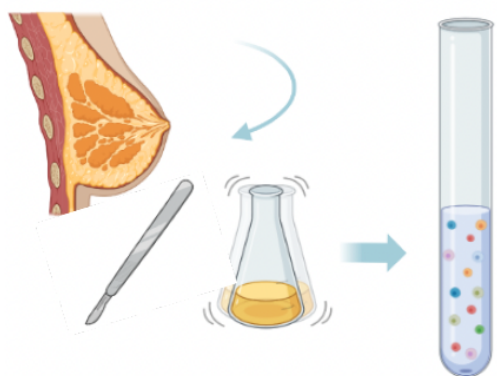
Association between breast cancer (BC) molecular subtypes and differentiation status of healthy mammary cells based on gene expression profiling



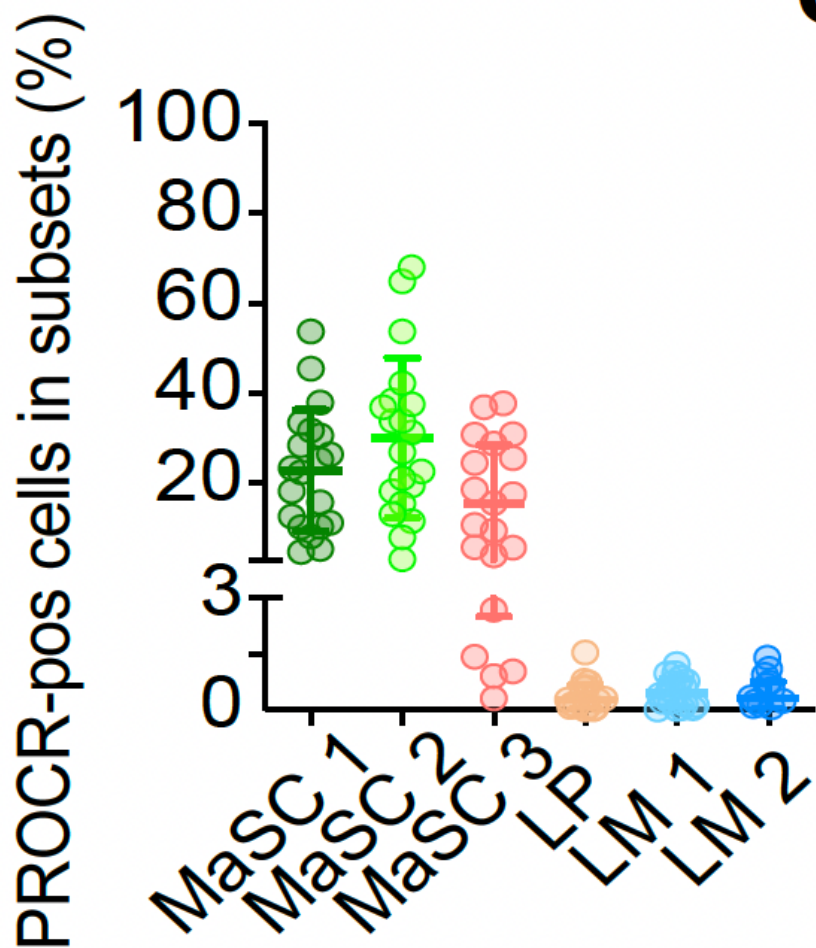
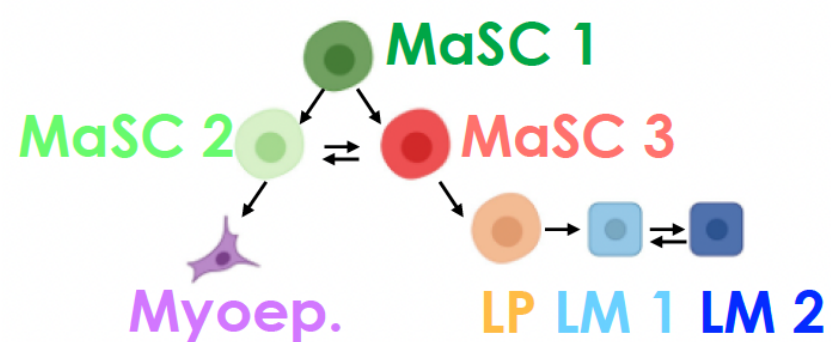
Prat, Perou, *Nat Med.* 2009,
Prat, Perou, *Mol Oncol.* 2011

Endothelial protein C receptor (PROCR) is a marker of multipotent mammary stem cells (MaSCs) in mouse [Wang et al, *Nature*, 2015](#)

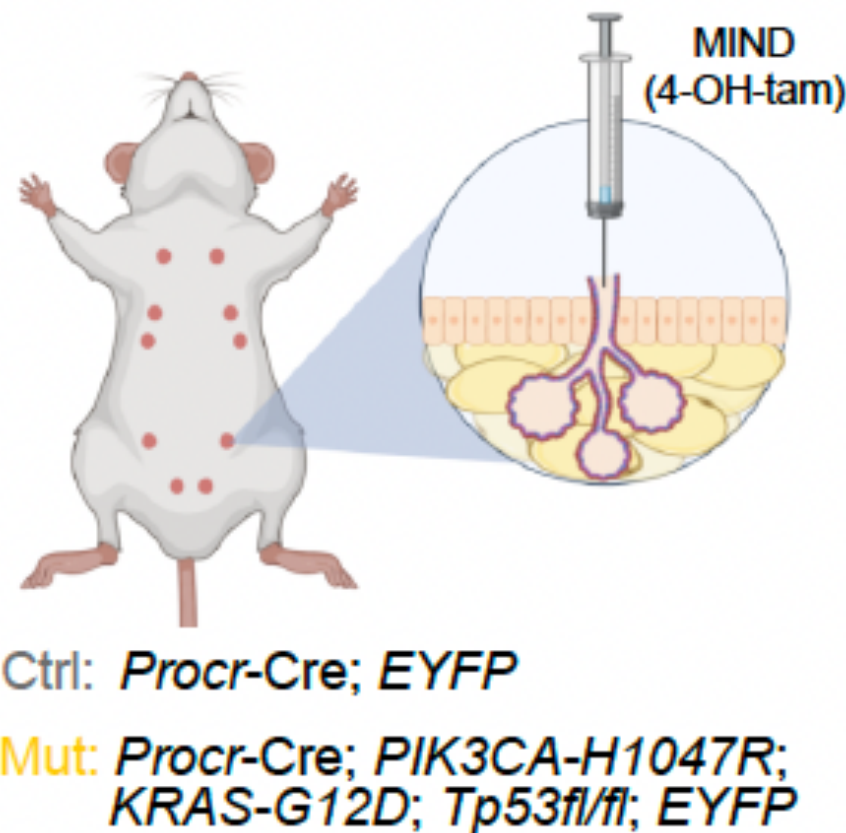
PROCR+ cells are found in Mammary Stem Cells populations



MaSC subsets from
[Morel, Ginestier et al., *Nat Med.*, 2017](#)



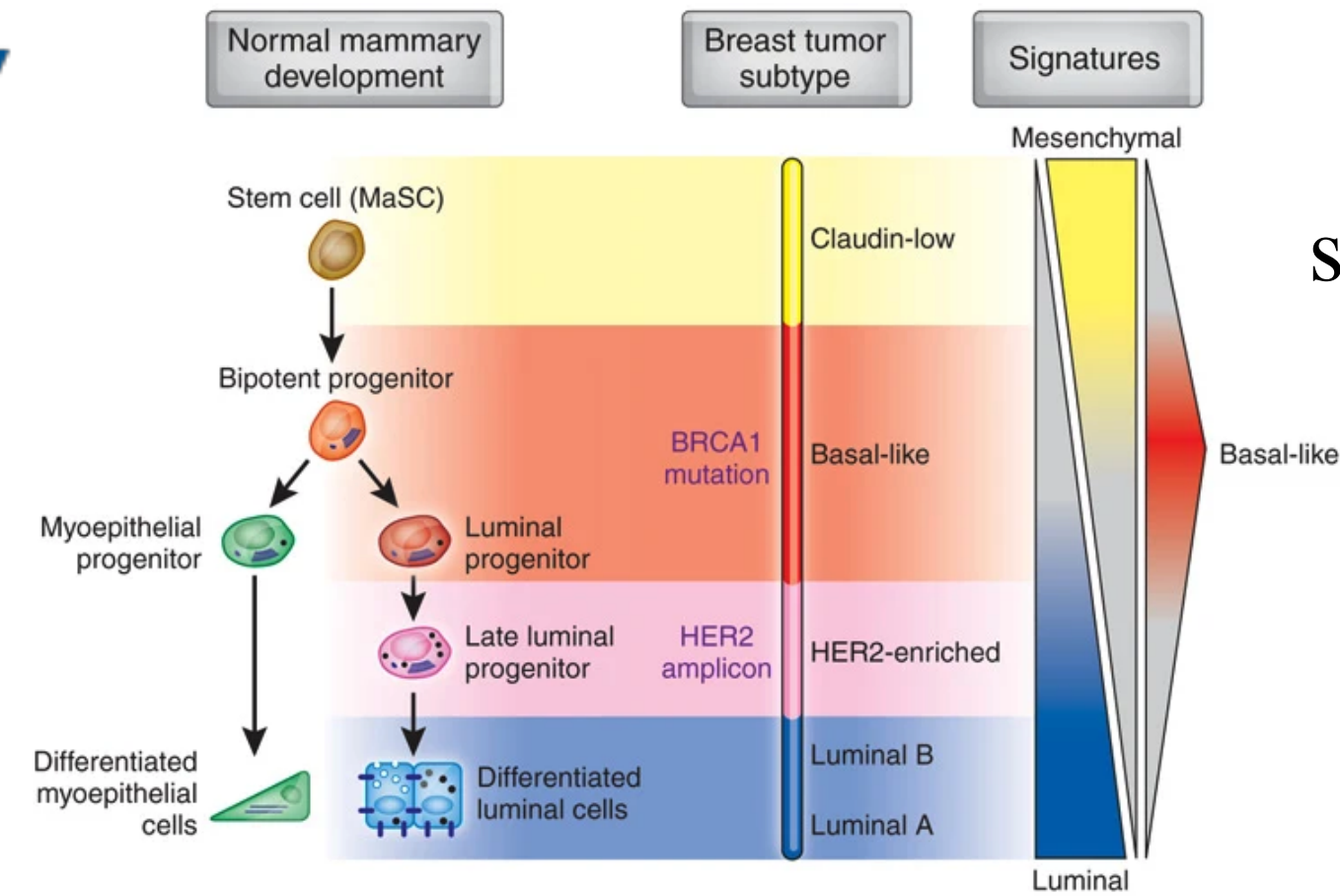
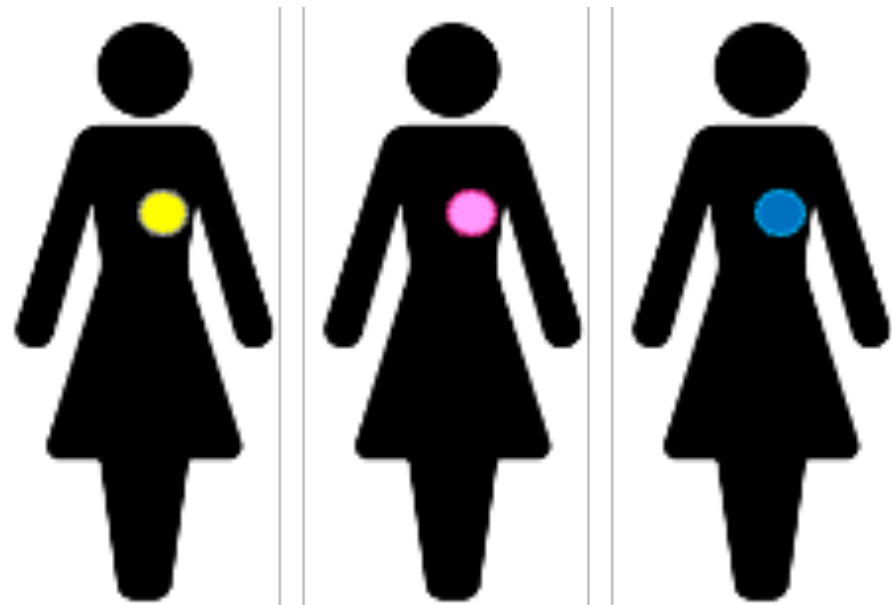
in mouse models PROCR+ MaSCs give rise to tumors



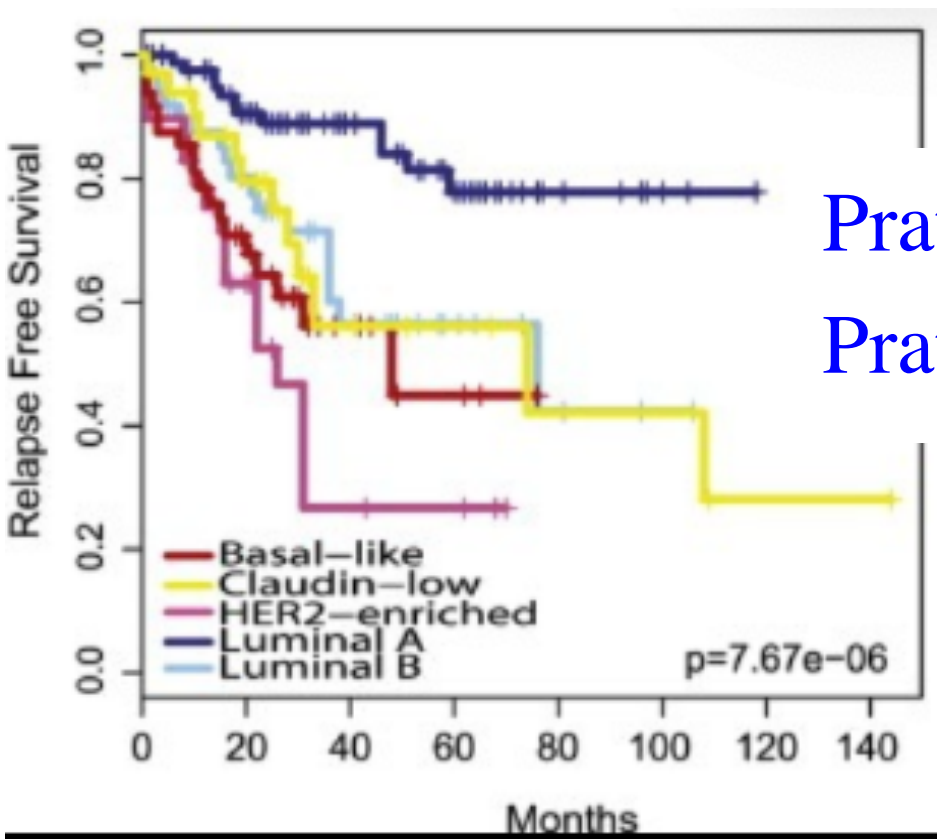
Breast cancer heterogeneity is responsible for therapy failure

Cell of origin concept

inter-tumoral heterogeneity



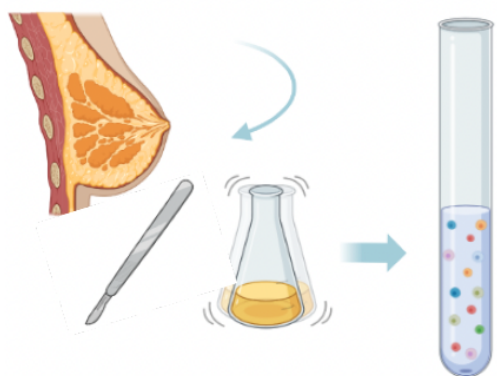
Association between breast cancer (BC) molecular subtypes and differentiation status of healthy mammary cells based on gene expression profiling



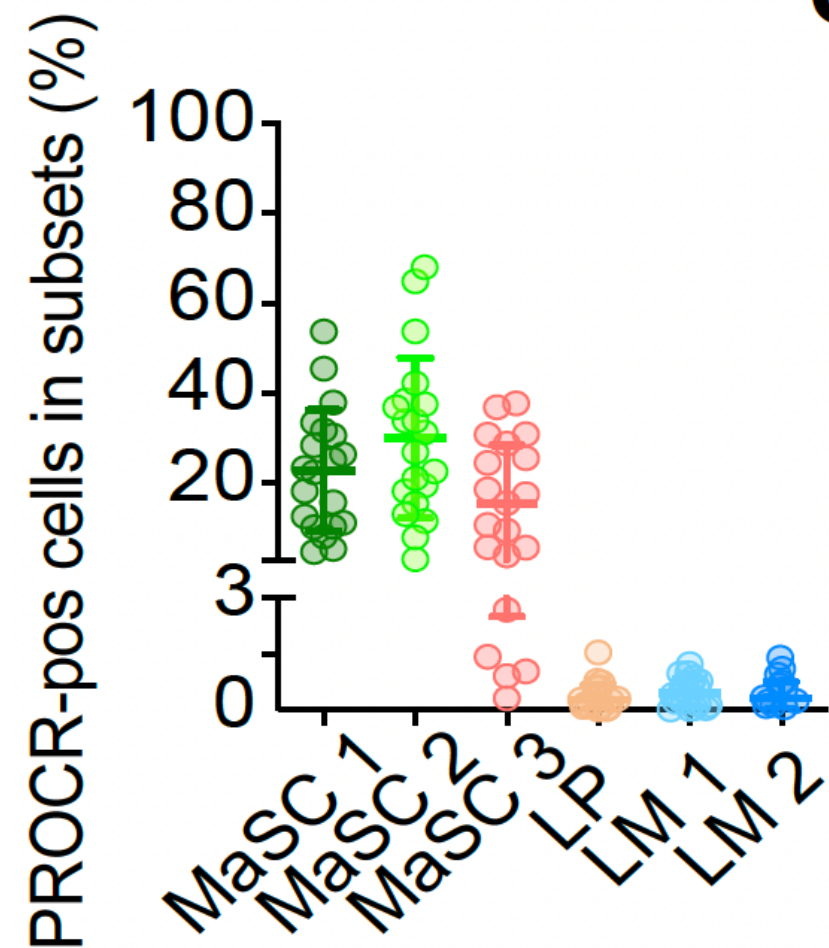
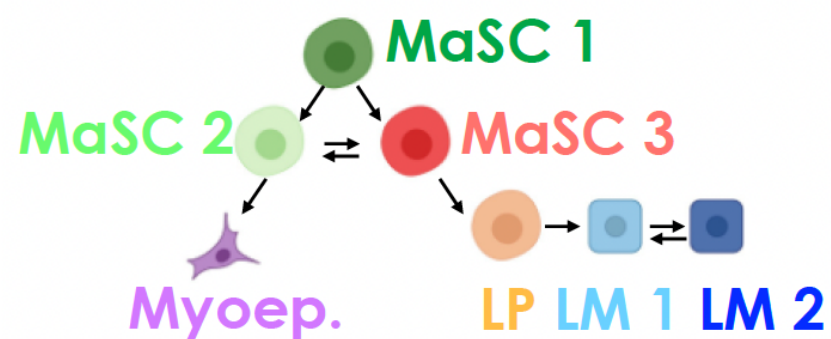
Prat, Perou, *Nat Med.* 2009,
Prat, Perou, *Mol Oncol.* 2011

Endothelial protein C receptor (PROCR) is a marker of multipotent mammary stem cells (MaSCs) in mouse [Wang et al, *Nature*, 2015](#)

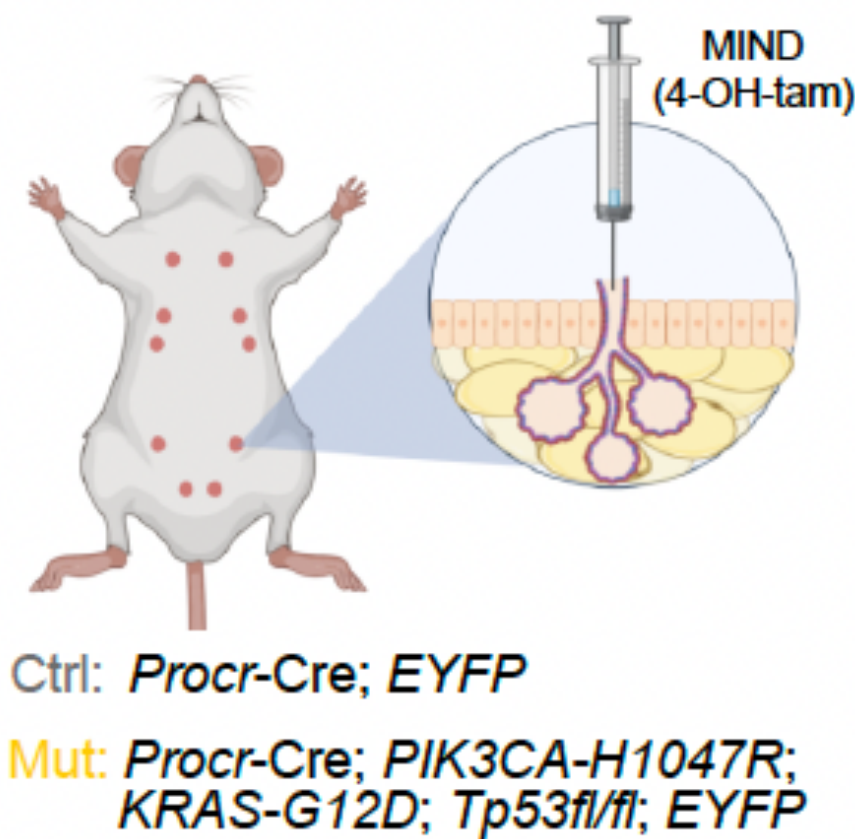
PROCR+ cells are found in Mammary Stem Cells populations



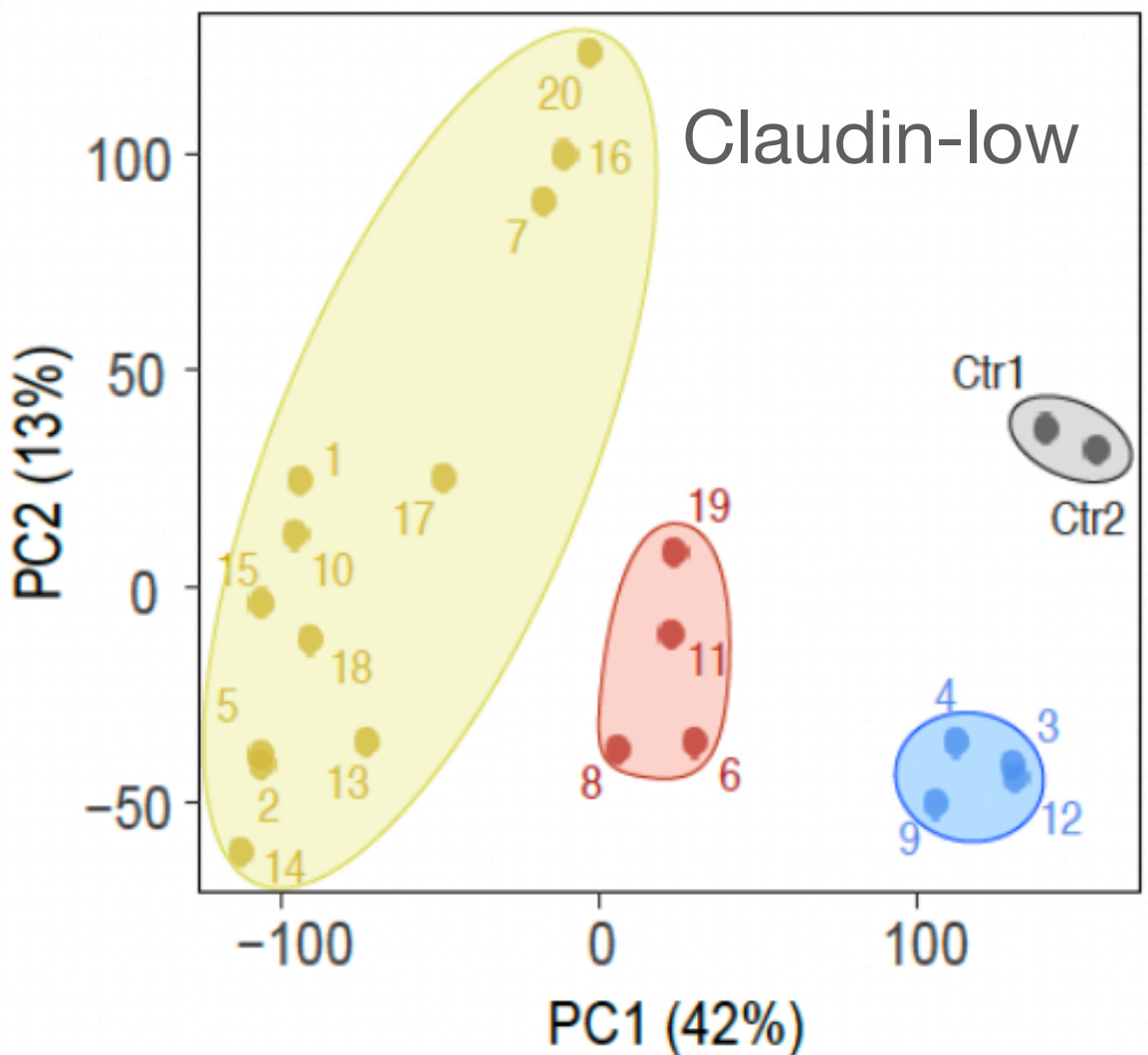
MaSC subsets from
[Morel, Ginestier et al., *Nat Med.*, 2017](#)



in mouse models PROCR+
MaSCs give rise to tumors



RNAseq on the tumors

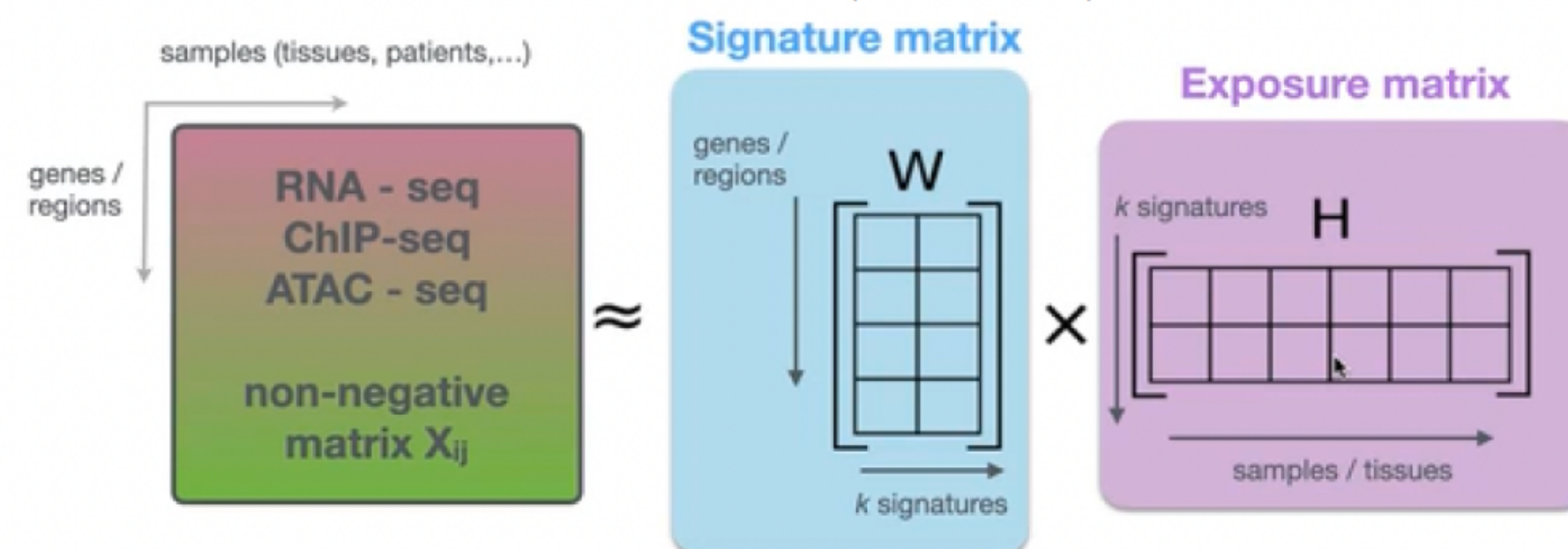




Signature extraction

Quintero, Hübschmann, Kurzawa, Steinhauser et al, *Biol. Methods Protoc.*, 2020

Non-negative matrix factorization (NMF)



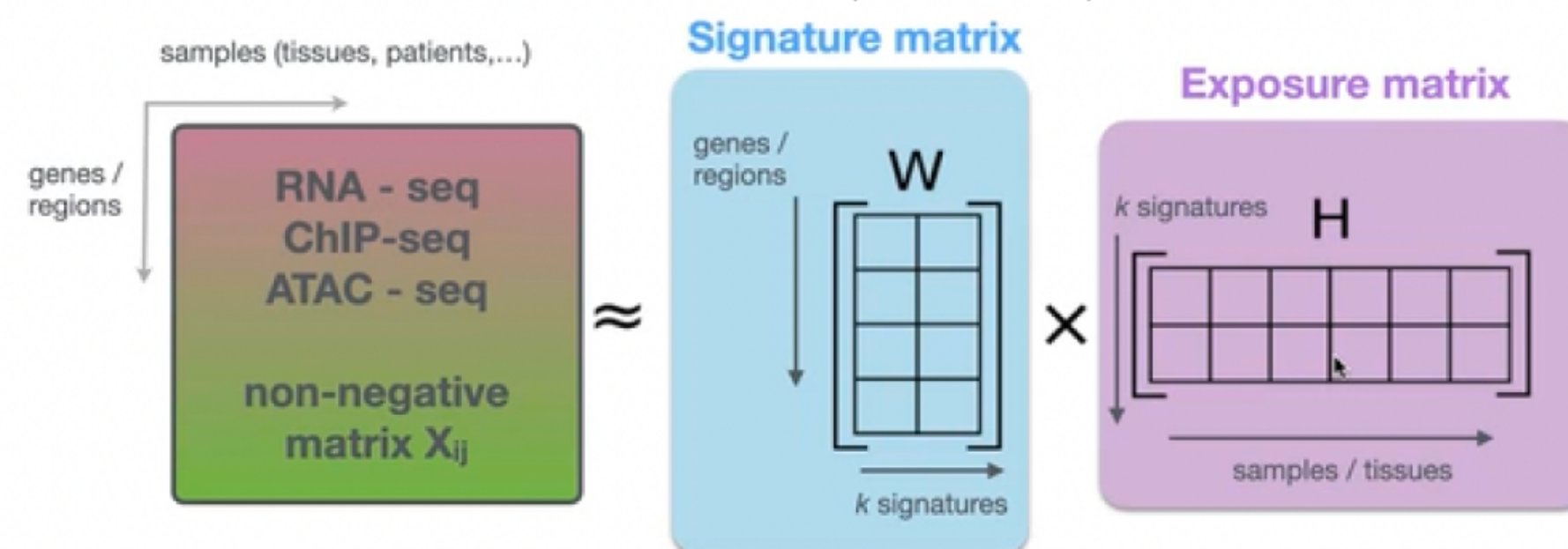
- unsupervised iterative algorithm with random initializations of $W, H \geq 0$
- *sparsity* in the decomposition, better *interpretability* of the features



Signature extraction

Quintero, Hübschmann, Kurzawa, Steinhauser et al, *Biol. Methods Protoc.*, 2020

Non-negative matrix factorization (NMF)



- unsupervised iterative algorithm with random initializations of $W, H \geq 0$
- *sparsity* in the decomposition, better *interpretability* of the features

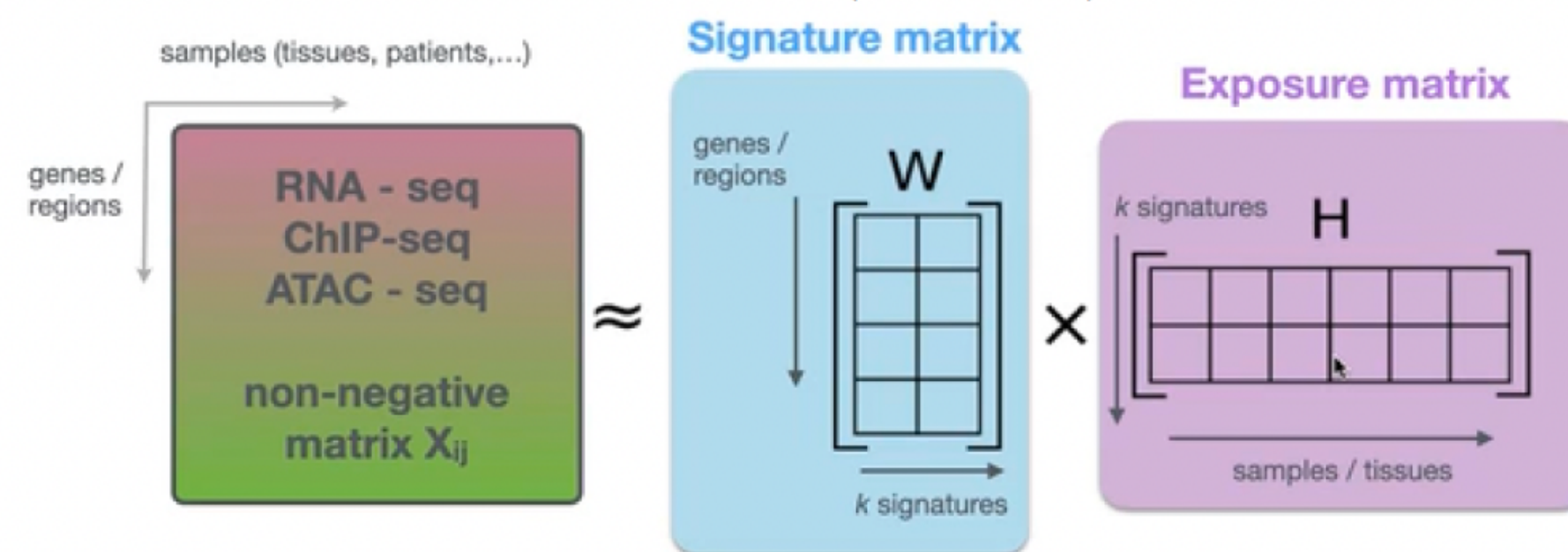




Signature extraction

Quintero, Hübschmann, Kurzawa, Steinhauser et al, *Biol. Methods Protoc.*, 2020

Non-negative matrix factorization (NMF)



- unsupervised iterative algorithm with random initializations of $W, H \geq 0$
- *sparsity* in the decomposition, better *interpretability* of the features

Signatures (ingredients)



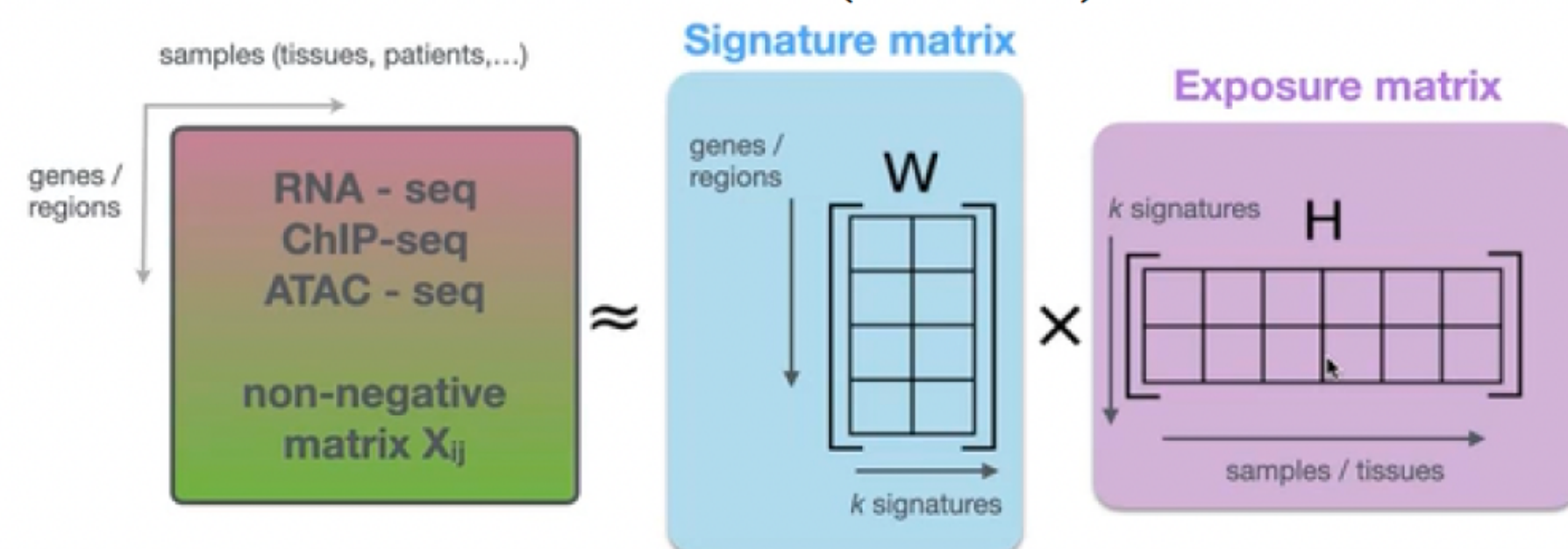
Exposures (how much)



Signature extraction

Quintero, Hübschmann, Kurzawa, Steinhauser et al, *Biol. Methods Protoc.*, 2020

Non-negative matrix factorization (NMF)

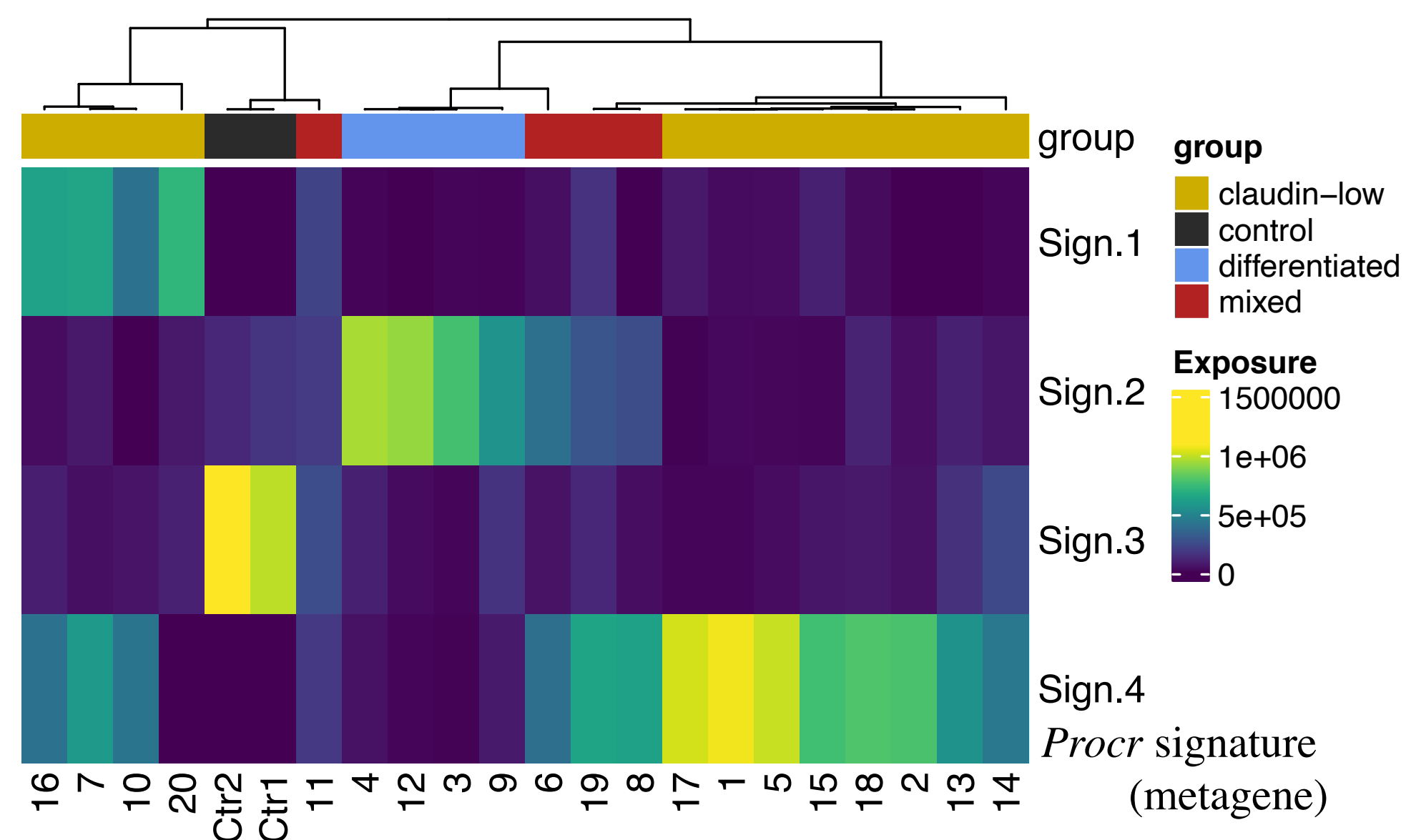
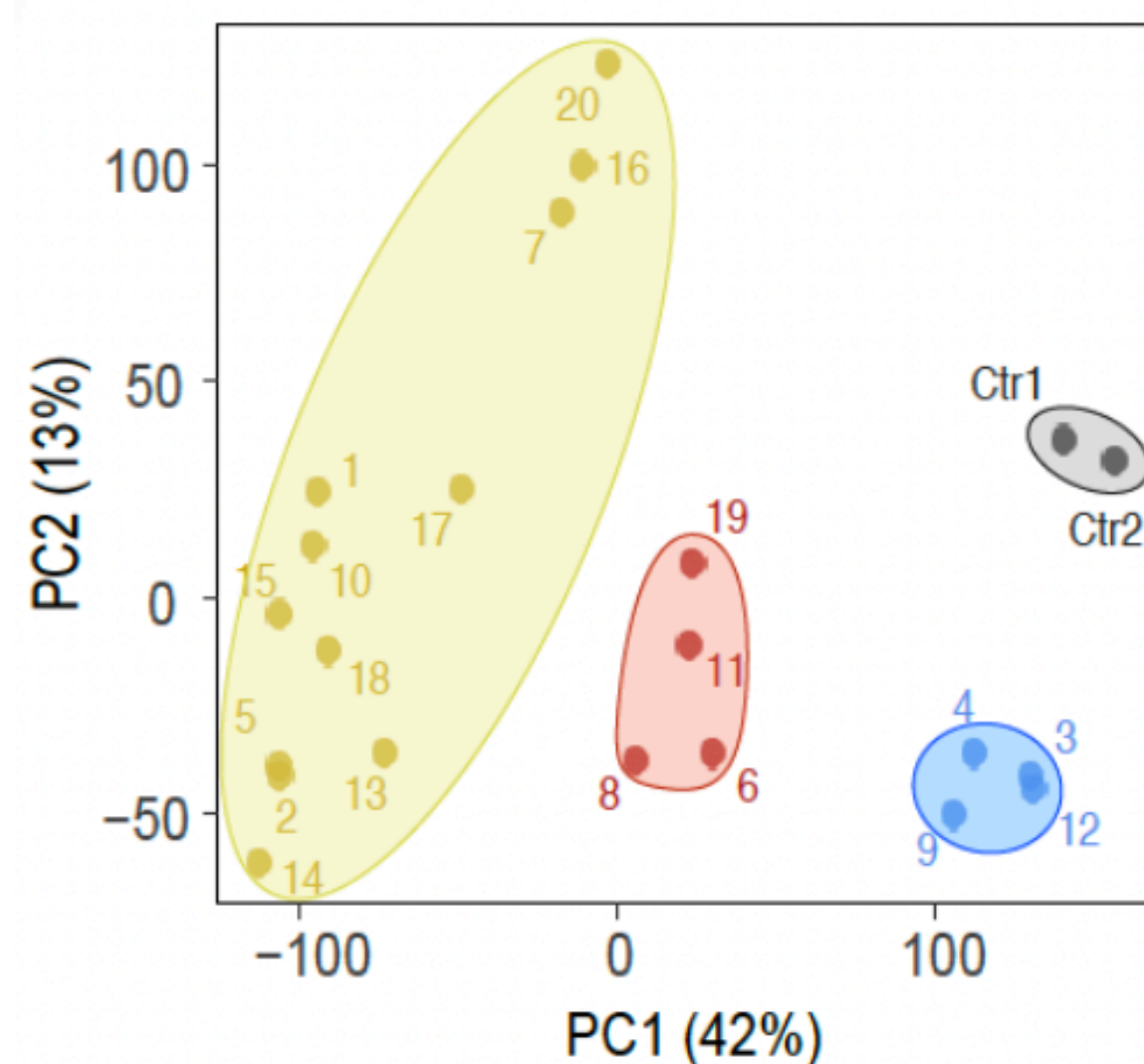


- unsupervised iterative algorithm with random initializations of $W, H \geq 0$
- *sparsity* in the decomposition, better *interpretability* of the features

Signatures (ingredients)



Exposures (how much)

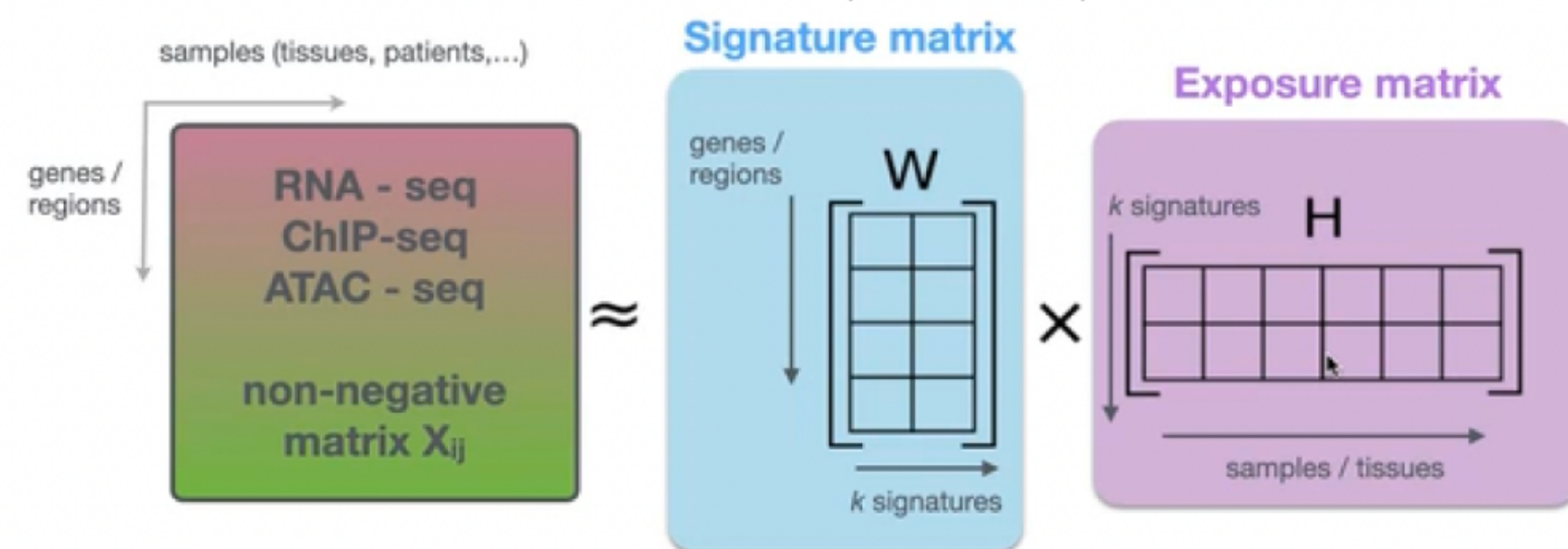




Signature extraction

Quintero, Hübschmann, Kurzawa, Steinhauser et al, *Biol. Methods Protoc.*, 2020

Non-negative matrix factorization (NMF)

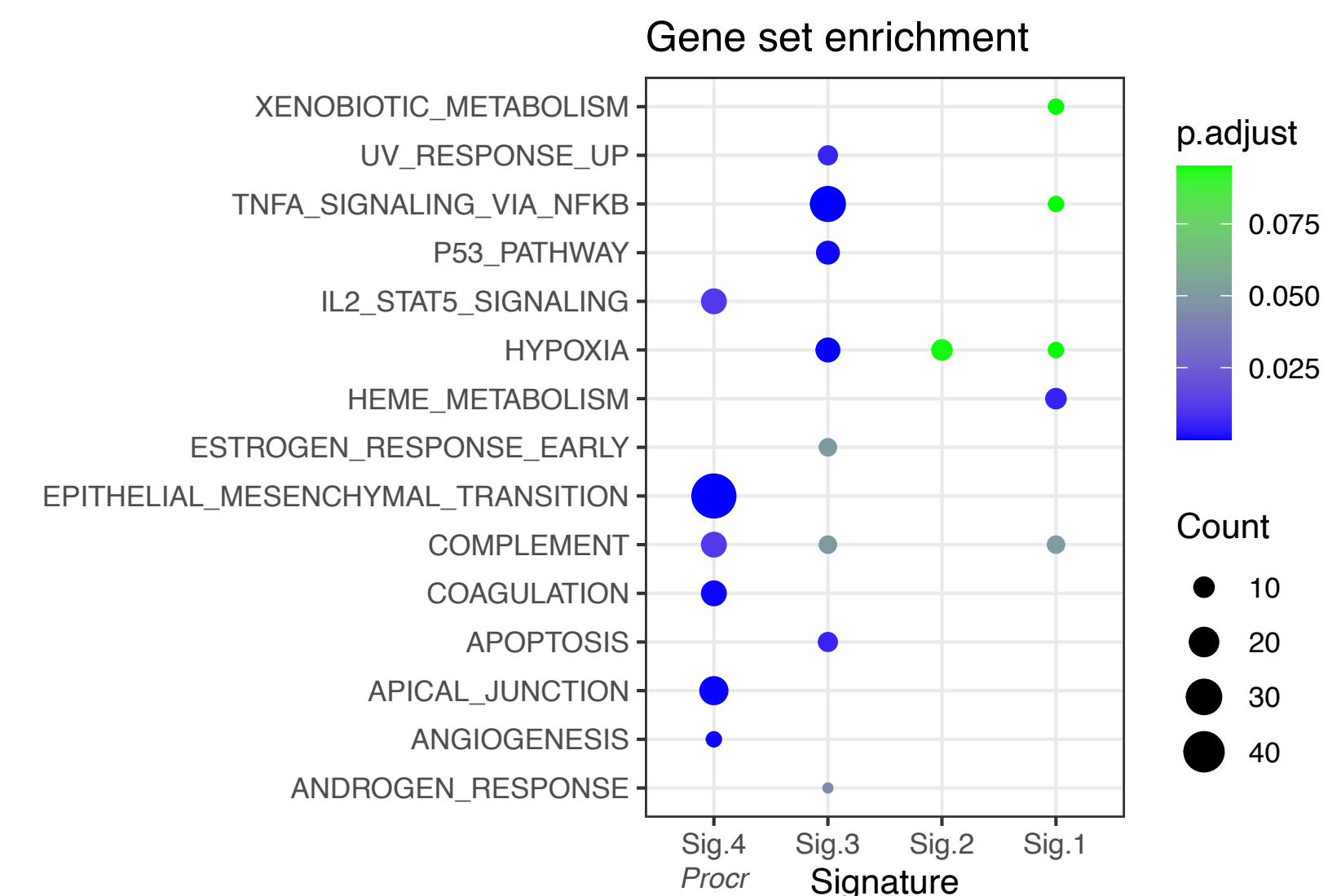
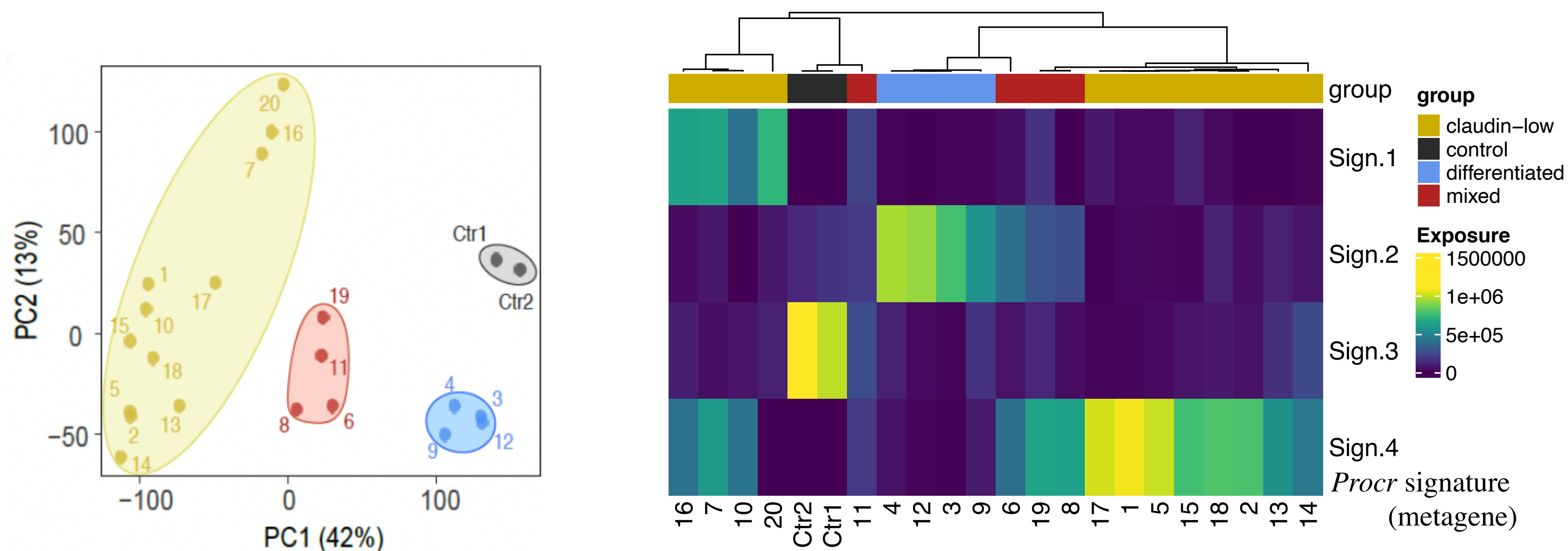


- unsupervised iterative algorithm with random initializations of $W, H \geq 0$
- *sparsity* in the decomposition, better *interpretability* of the features

Signatures (ingredients)



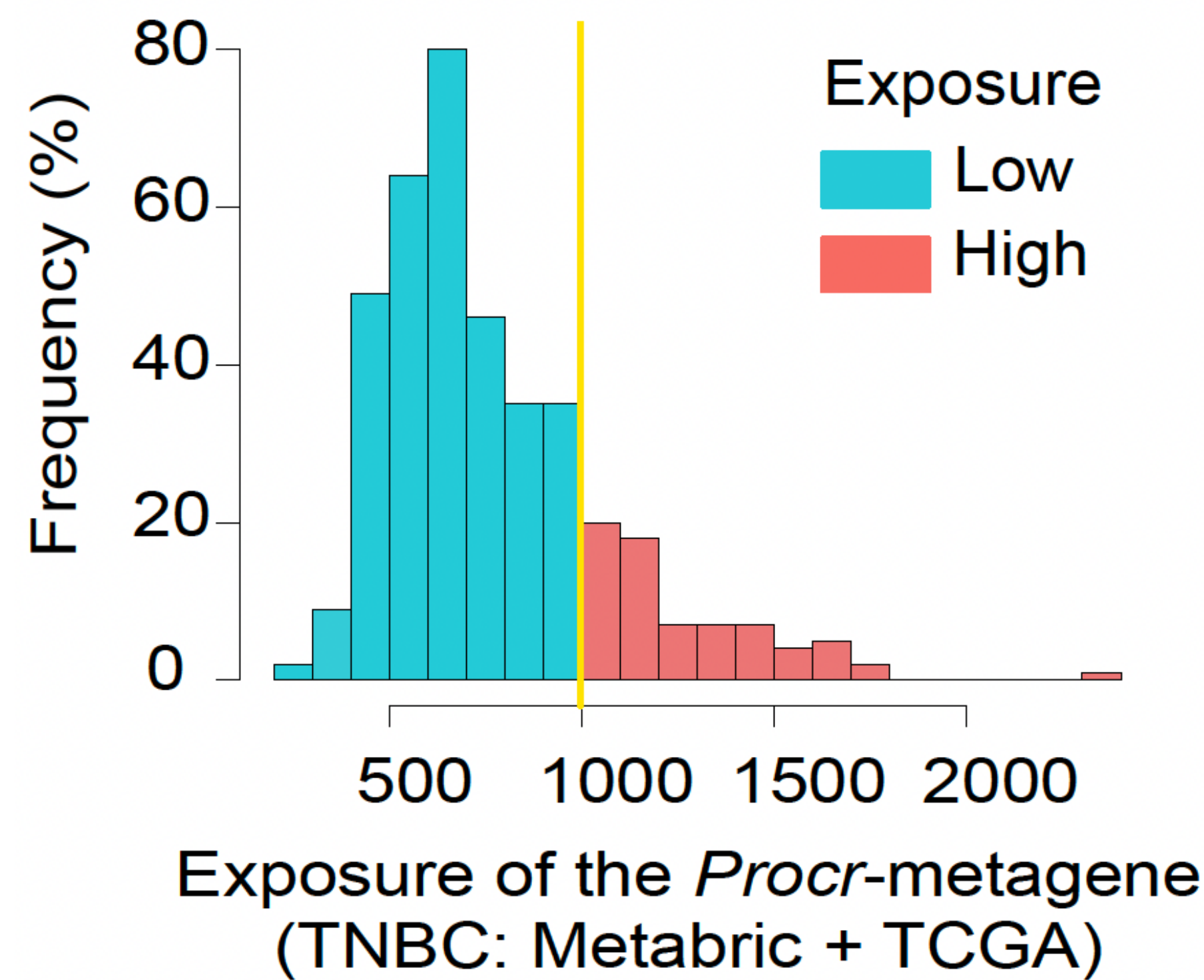
Exposures (how much)



High exposure to PROCR signature predicts worse outcome in triple-negative breast cancer patients

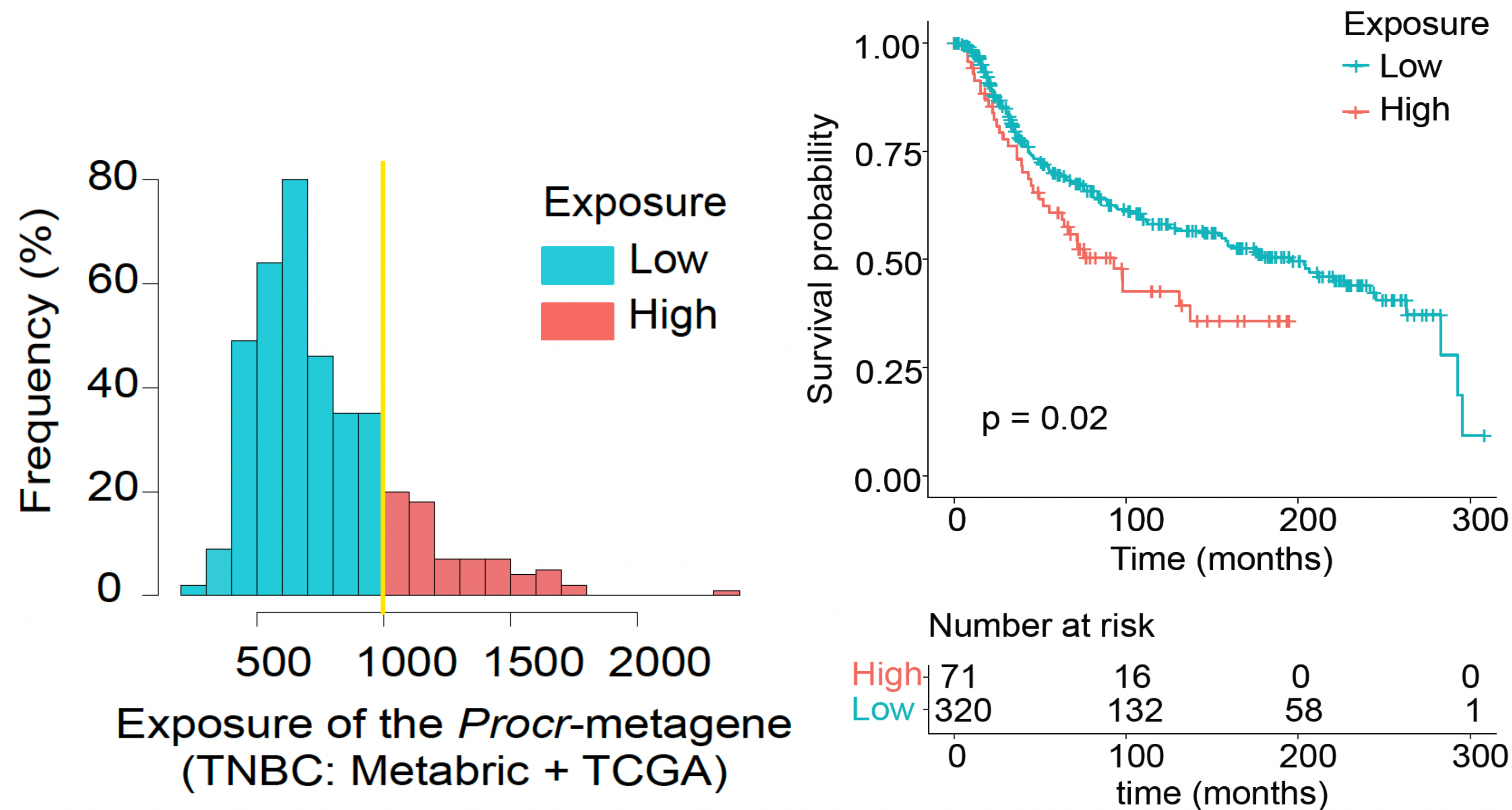
High exposure to PROCR signature predicts worse outcome in triple-negative breast cancer patients

TCGA and Metabric patient cohorts



High exposure to PROCR signature predicts worse outcome in triple-negative breast cancer patients

TCGA and Metabric patient cohorts



**Come and meet
me at Poster 11!**

michal.kloc@unibas.ch

Bentires-Alj lab

